

● NUMBER OF PQI PROJECTS ADDRESSING A CRITICAL SUCCESS FACTOR

INTEGRATED HEALTH SERVICES PLAN

Critical Success Factors:

- Service flows and pathways for priority populations **x1**
- Effective EMR training, guidelines, support and promotion **x1**
- Care plans for people with complex needs **x3**
- Improved transition bet. primary, acute, and specialist services **x3**
- Alignment of interprofessional teams, specialists and specialized services with population health and First Nations **x2**

FLOW: CARE IN THE RIGHT PLACE

Critical Success Factors:

- Care in the Right Place **x6**
- Improved access to Diagnostics **x4**
- “Rehabilitative Care” Philosophy in all clinical care settings **x1**
- Improved Care of the Frail Elderly **x2**

POPULATION HEALTH PLAN

Critical Success Factors:

- Capacity for high quality protection, prevention and promotion services across NH **x2**
- Cultural safety and health environments **x4**
- Collaborate to strengthen the continuum of care **x4**

QUALITY IMPROVEMENT CULTURE PLAN

Critical Success Factors:

- Physician leadership and engagement in quality improvement **x53**

REQUIRED ORGANIZATIONAL PRACTICES

Critical Success Factors:

- Safe and effective care is provided to all clients **x5**
- Develop and implement strategies to improve outcomes in key specialty areas **x7**

SURGICAL SERVICE PLAN

Critical Success Factors:

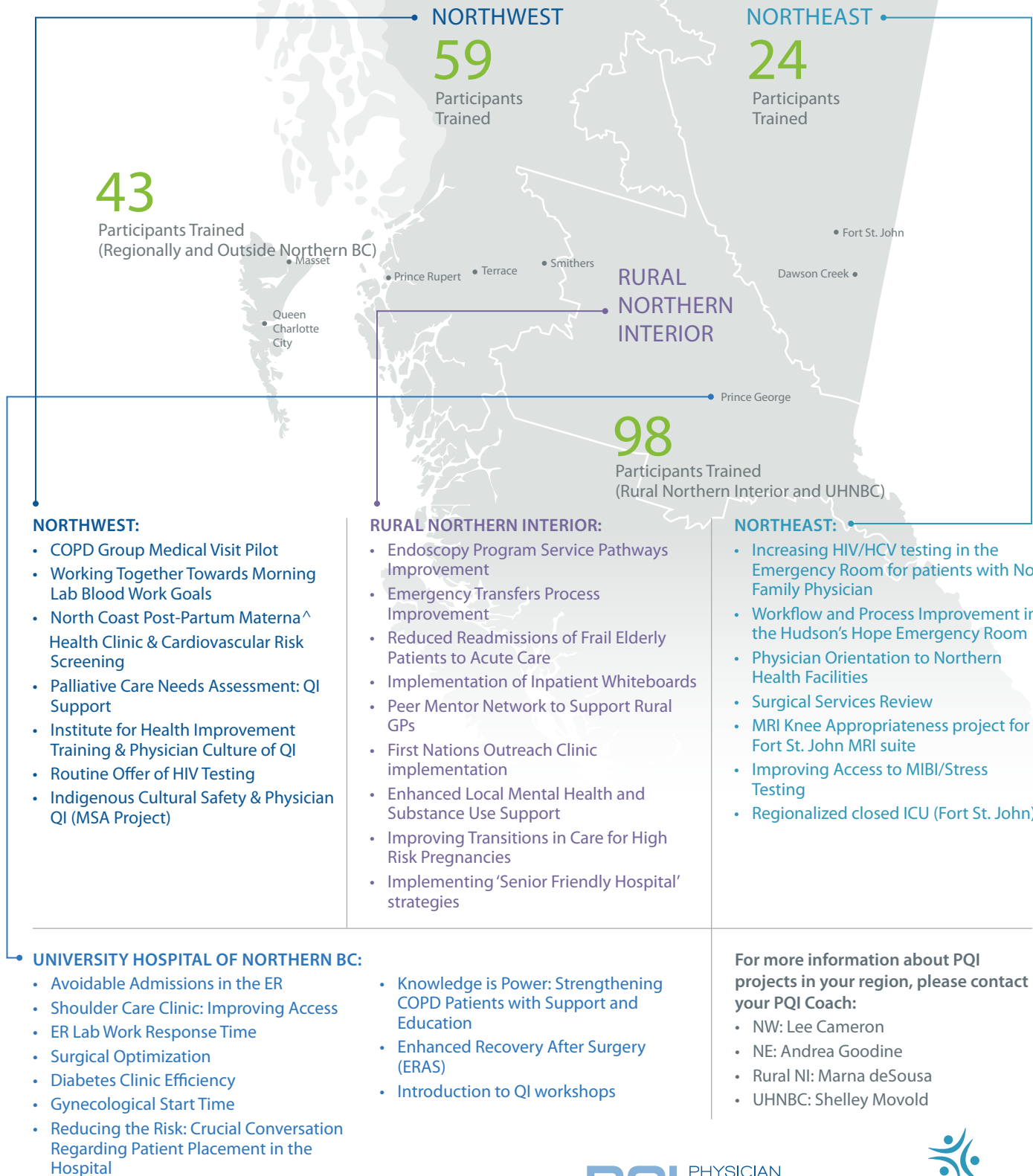
- Standardize regional surgical services and process **x1**
- Collaborate on provincial surgical solutions **x1**
- Engage pre-surgical/ surgical patients in upstream, health promotion activities **x1**
- Apply wait list management leading practices to achieve 26 week maximum wait time standard **x1**
- Maximize surgical capacity to meet demand **x2**

WORK FORCE SAFETY & SUSTAINABILITY

Critical Success Factors:

- Support NH's new onboarding program **x1**

SELECT QI PROJECTS and Participants Trained in QI



For more information about PQI projects in your region, please contact your PQI Coach:

- NW: Lee Cameron
- NE: Andrea Goodine
- Rural NI: Marna deSousa
- UHNBC: Shelley Movold